

Decorated Egg Ornament

by Mary Currin



Symbol: Angel representing Magic

“Angels are a very special symbol to me. From as far back as I can remember, we prayed to our guardian angels to guide and protect us. I always felt the presence of angels to be very safe and reassuring, and a reminder of the unseen magic of life and creation. As an adult exploring beyond my family's religion and teaching, I have found that angels are loved and honored in every religious tradition I have studied. The quiet feeling of awe and wonder that one feels in the presence of a new born child~ that, for me, is the feeling of angels. I try to keep that feeling, if only just a bit, in every undertaking, every conversation, art project, teaching experience, every walk in nature or in the city, every listening and watching and every creating. Angels to me represent the breath and magic of life, and never more so than at the Christmas holiday season, when we all pause to open ourselves in some way to the "magic".

Materials:

Egg

Wool roving-small amount

Thread

Beeswax, natural color-2 teaspoons

Beeswax Crayon, blue color

Silver or gold glitter

Sewing needles- small for angel, large for egg

White Glue

Small sharp scissors

Can or jar, plus saucepan or crockpot for melting beeswax

Step 1~ The Angel

Tear off two bits of wool~ one is approximately 3 inches long for the body; one is approximately 1 inch long for the wings.

Tie a knot in the middle of the longer length of wool.



Cut a length of thread 12- 18 inches long. Fold the body together at the knot and tie securely with thread, under the knot to form the head and neck. Leave the long ends of thread.

Place the wings (the 1 inch bit of wool) centered between the two front and back of the body, just below the knot.



Close the body over the wings and tie with the attached thread as follows:

From behind the neck, bring the two ends of the thread over the chest and wings, forming an “x” over the chest. Bring both ends around back and around to the front, winding around the body under the arms, and then tie securely in the back.

Thread the two ends of the thread through your needle. Insert needle into angel’s body at the knot in back and bring it out through the top of the head. Do not trim the thread.



Trim the wings close to the body. Trim the body to barely more than 1 inch long.

To shape the end of the body, twist the wool, and trim it while holding it in place. While still holding the twisted wool, Apply a drop of non toxic glue, and continue to twist the end of the angel's body to form a pointed shape as the glue dries. Once the shape is secure, set the angel aside to finish drying. You may prefer to omit this step and leave the bottom of the angel in a "fluffy" shape.



Step2- The Egg

Pierce a hole in the top center of the egg. Keep this hole as tiny as you can.

Pierce another hole in the side center of the egg. You may enlarge this hole for ease in removing the insides of the egg.

Holding the egg with the larger hole positioned directly above a bowl, blow through the hole at the top of the egg to eject the yoke and the egg whites from the shell in one quick hard blow, if possible. It may take a few quick hard bursts of air to make the yoke and egg whites burst through the hole at the side of the eggshell. If you prefer, you may blow out the egg using a syringe.

Very carefully cut out a hole in the side of the egg, beginning with the small hole and slowly trimming away the shell until the hole is of the desired size and size. Proceed very carefully so as not to fracture the shell as you cut.

Rinse the inside of the egg thoroughly and remove all traces of membrane, then set it aside to dry thoroughly. You may use a hair dryer to dry out the egg.

Place beeswax into a metal can or glass jar. Cut a small piece of blue beeswax crayon and place in the jar or can with the beeswax, to color the wax blue.

Create a double boiler by placing the jar of wax into a saucepan with 1-2 inches of water. With the stove on low, melt the wax. Once the wax is melted, swirl to mix the color evenly and turn stove to the lowest possible heat, keeping the jar of wax warm so the wax does not cool and harden.



Holding your finger over the pinhole at the top of the egg, carefully pour 1-2 teaspoons of wax into the egg. You must begin swirling the wax inside the egg immediately to coat the egg's interior all the way to the very edge of the cutout hole.

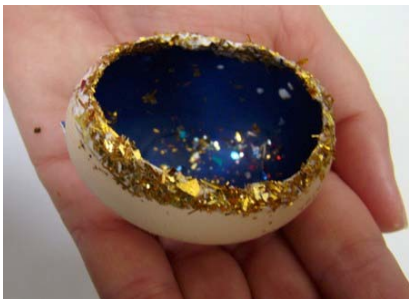
While the wax is still warm, sprinkle glitter inside the egg. It is very important that this is done right after the inside of the egg is coated with wax, while the wax is still warm, so that the glitter will stick to the wax. The desired effect is that of a starry sky for the Angel's background.



Step 3~ Finishing

Cover the egg with glue (you may like to thin the glue a bit with a little water) and sprinkle with a light covering of glitter.

Decorate the edge of the cutout hole by applying a thin line of non-toxic glue (full strength) to the edge of the cutout hole and covering thickly with glitter or by gluing rhinestones, lace trim, a string of beads, or other embellishments around the edge of the cutout hole.



Set aside the egg to dry, or dry on LOW heat with a hair dryer, taking care not to heat the egg enough to melt the wax inside.

Once the egg is completely dry, open the hole on top of the egg by piercing through the dried wax with a large needle.

Take the wool Angel and trim the ends of the thread at the top of the head to approximately 8 inches long. Thread the two ends through your needle, and through a bead with a large enough hole not to have to use a special beading needle. Tie the thread around the bead to secure it at approximately $\frac{1}{2}$ to $\frac{3}{4}$ inch above the top of the angel's head. You may wish to apply a dab of glue to the top of the bead.



Now insert the threaded needle through the hole at the top of the egg from the INSIDE of the egg.

Pull the threads through the hole so that the bead is flush with the inside of the egg and the angel is at the desired spot inside the egg.

Holding the thread in place at the outside top of the egg, insert the threads through another large bead. Place a dab of glue right on top of the hole at the top of the egg, and slide the bead down to stick to the glue. It helps to wrap the thread around and through the bead once or twice more, to keep the bead and angel in place. Hold the bead to the egg until the glue is dry and the angel's place is secure. You may wish to decorate the thread with additional beads, and tie the threads together at the ends to create a loop for hanging the ornament.

